

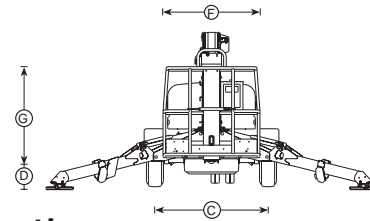
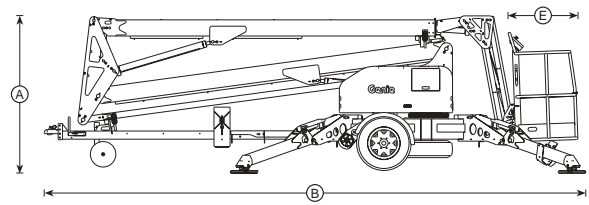
#### **Automatic Leveling System (patents pending)**

The exclusive Genie Automatic Leveling System is “self-leveling” and is standard equipment on all TMZ-50/30 models. This system provides industry-leading 10 degrees leveling capability and allows the operator to hydraulically deploy the outriggers and automatically level the machine from the ground controls. Machine setup can be completed in less than 25 seconds when the operator deploys all four outriggers simultaneously.

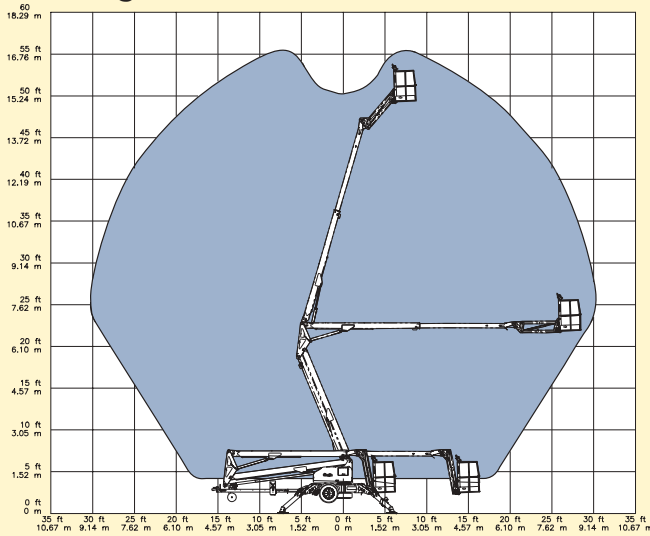
The system self-levels the machine to 1 degree in all directions. The level sensor alarm will not sound unless the machine is over 2 degrees out of level. This built-in tolerance provides resistance to level sensor “nuisance tripping”, which can be a common occurrence on other trailer mounted booms. This feature increases productivity and sets the Genie TMZ-50/30 apart from the competition.

## Standard Features

- 56 ft (17.2 m) working height\*
- 30 ft (9.1 m) horizontal reach
- Articulating jib has 135° working range
- Compact 65 in (1.65 m) width
- 500 lb (227 kg) lift capacity
- Large, 10 x 10 in (25 x 25 cm) outrigger footpads
- Junction box and shelf to accommodate generators up to 24 x 20 x 16 ½ in (61 x 51 x 42 cm)
- AC wiring to platform
- Surge brakes
- Parking brake
- Horn
- Hour meter



## Range of Motion



## Options and Accessories

- Material lift attachment device
- Drive and set option
- Air line to platform
- Spare tire
- Fluorescent tube caddy
- Flashing beacon
- Platform rotation (ANSI and CE models only)
- Electric, hydraulic or mechanical surge brakes
- 2 in (50 mm) ball coupler
- 2 5/16 in (6 cm) ball coupler
- 2 1/2 in (6.35 cm) I.D. Pintle ring coupler
- Clevis coupler

## Standards Compliance

- ANSI A92.2
- CAN/CSA-C225-M88
- CE Compliance
- AS 1418.10

## Specifications

Model	US	Metric
Working height*	56 ft	17.2 m
Platform height	50 ft	15.2 m
Ⓐ Height – stowed	78 in	2 m
Ⓑ Length – stowed	22 ft	6.7 m
Ⓒ Width	65 in	1.65 m
Ⓓ Ground clearance	10 in	25 cm
Ⓔ Platform length	30 in	76 cm
Ⓕ Platform width	48 in	1.22 m
Ⓖ Platform railing height	43 in	1.1 m
Toeboard height	7 in	18 cm
Toeboard height – entry	4 in	10 cm
Entry height	20 in	51 cm
Horizontal reach – from pivot	30 ft	9.1 m
Horizontal reach – from edge of outrigger footpads	23 ft	7 m
Up and over clearance	22 ft	6.7 m
Outrigger footprint – length	14 ft	4.3 m
Outrigger footprint – width	14 ft	4.3 m
Outrigger type	hydraulic	
Leveling capability	10°	10°
Lift capacity		
– ANSI, CE	500 lb	227 kg
– CSA, models with platform rotation option	440 lb	200 kg
Turntable rotation	359° non-continuous	
Towing speed rating	60 mph	97 km/h
Power sources	24V (4 6V 250 AH batteries)	
	Honda Gas 11 hp (8 kw)	
	Hatz Diesel 7 hp (5 kw)	
	Bi-fuel: 24V (4 6V 250 AH batteries) and Honda Gas 11 hp (8 kw)	
	Bi-fuel: 24V (4 6V 250 AH batteries) and Hatz Diesel 7 hp (5 kw)	
Gradeability	20%	20%
Tongue weight	400 lb	181 kg
Machine weight – ANSI, CE	4,600 lb	2,087 kg
– CSA	4,850 lb	2,200 kg

\*The metric equivalent of working height adds 2 m to platform height. U.S. adds 6 ft to platform height.